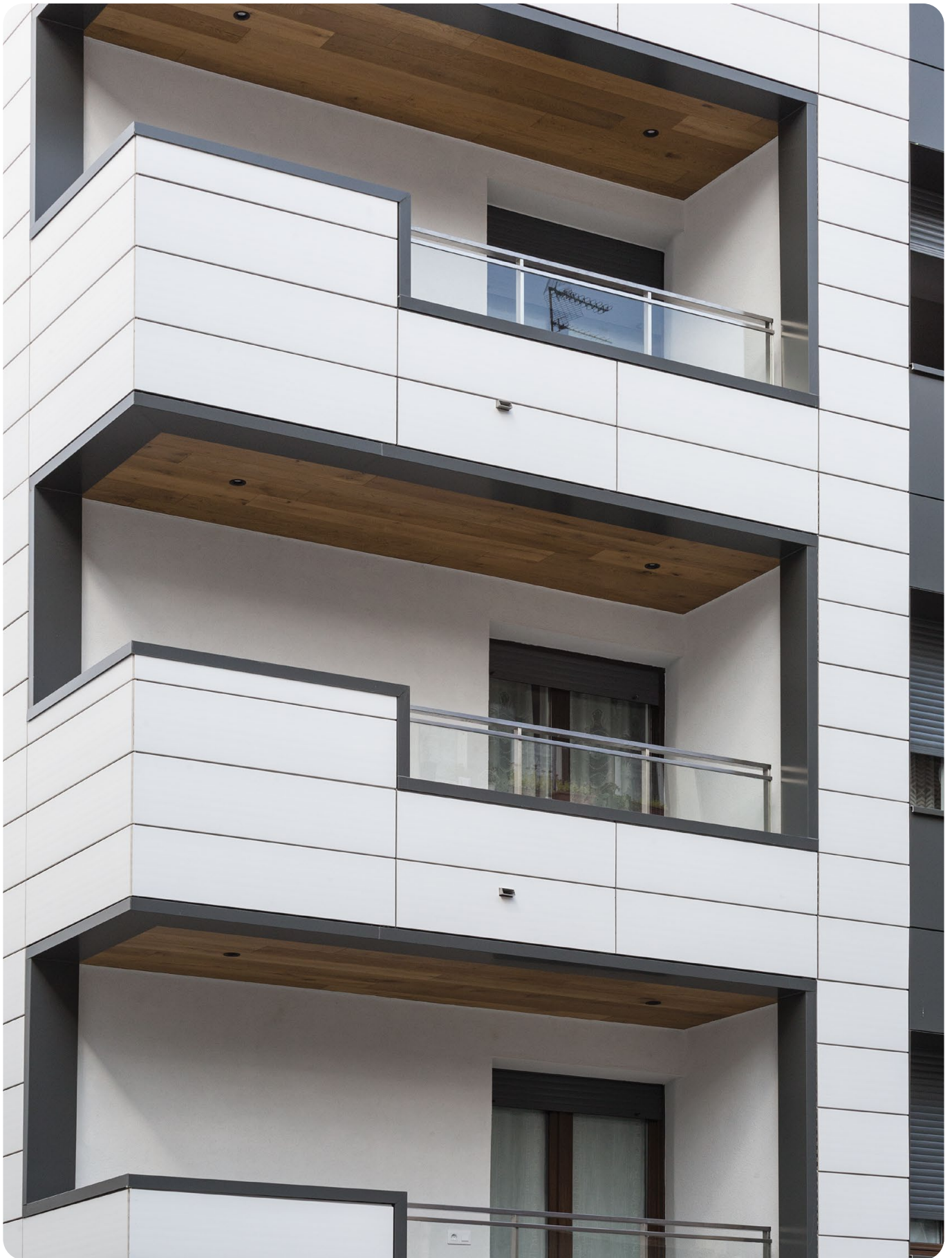


TERRAFACE

Terracotta Cladding



Transform Your Building with TERRAFACE

Planners and building owners now have an exceptional option for both renovating existing structures and constructing new buildings with the innovative TERRAFACE terracotta cladding product range. TERRAFACE offers terracotta façade cladding that rival standard large-format façade elements in material quality and exceptional price-performance ratio. These panels can be installed more quickly and cost-effectively, thanks to our advanced installation system.



Key Features:



01

Optimal Size and Lightweight

The 1200x300 mm size is ideal for a variety of projects, offering a perfect balance of coverage and manageability. With a low weight of approximately 32 kg/m², these tiles are perfect for both revitalizing older buildings and enhancing new constructions with a fresh, attractive look.

02

Effortless Installation

Mounting brackets can be attached to almost any façade using just a few holes and dowels. After adding insulation, the TERRAFACE terracotta panels can be installed swiftly and securely, piece by piece, using the our clip system. This system facilitates easy partial installation, harmonizing modernity with tradition.

03

Commitment to Quality

TERRAFACE upholds the highest standards in its façade systems. The natural tones and surface finishes of our terracotta cladding enhance the aesthetic appeal while ensuring energy efficiency, durability, and cost-effectiveness.

Why to choose TERRAFACE?

Choose TERRAFACE for a façade solution that combines beauty, efficiency, and ease of installation, bringing a new level of sophistication to your building projects, whether for renovation or new construction.

Low cost:

TERRAFACE offers a high return on investment due to its durability, low maintenance, and energy efficiency, resulting in long-term savings. Additionally, its quality ensures enhanced property value.

Versatile colorus:

TERRAFACE focuses on the most popular and versatile colors and sizes to meet the majority of design needs. Custom colors and sizes can be considered for larger projects upon request.

High durability:

TERRAFACE is manufactured in Germany using high-quality materials, ensuring exceptional durability and weather resistance. It has been tested and certified to withstand various environmental conditions.

Easy installation:

TERRAFACE is designed for ease of installation with a universal size of 1200x300 mm, reducing labor time and costs. We provide comprehensive installation guides and support for contractors.

Sustainability:

TERRAFACE is made from natural and recyclable materials, contributing to eco-friendly building practices. Our production processes aim to minimize carbon footprint, aligning with sustainability goals.

Compatibility:

TERRAFACE's lightweight and versatile design make it compatible with a wide range of structures, including both new constructions and renovations. Detailed technical specifications are available to ensure compatibility.

Thermal and acoustic properties:

TERRAFACE provides excellent thermal and acoustic insulation properties, enhancing energy efficiency and indoor comfort.

Low-maintenance:

TERRAFACE is designed to be low-maintenance, with resistance to weathering, fading, and staining. Periodic cleaning is simple and cost-effective, ensuring the cladding remains in excellent condition.

Fast lead times:

We understand the importance of timely delivery. TERRAFACE maintains a streamlined production process and efficient supply chain management to meet project deadlines.

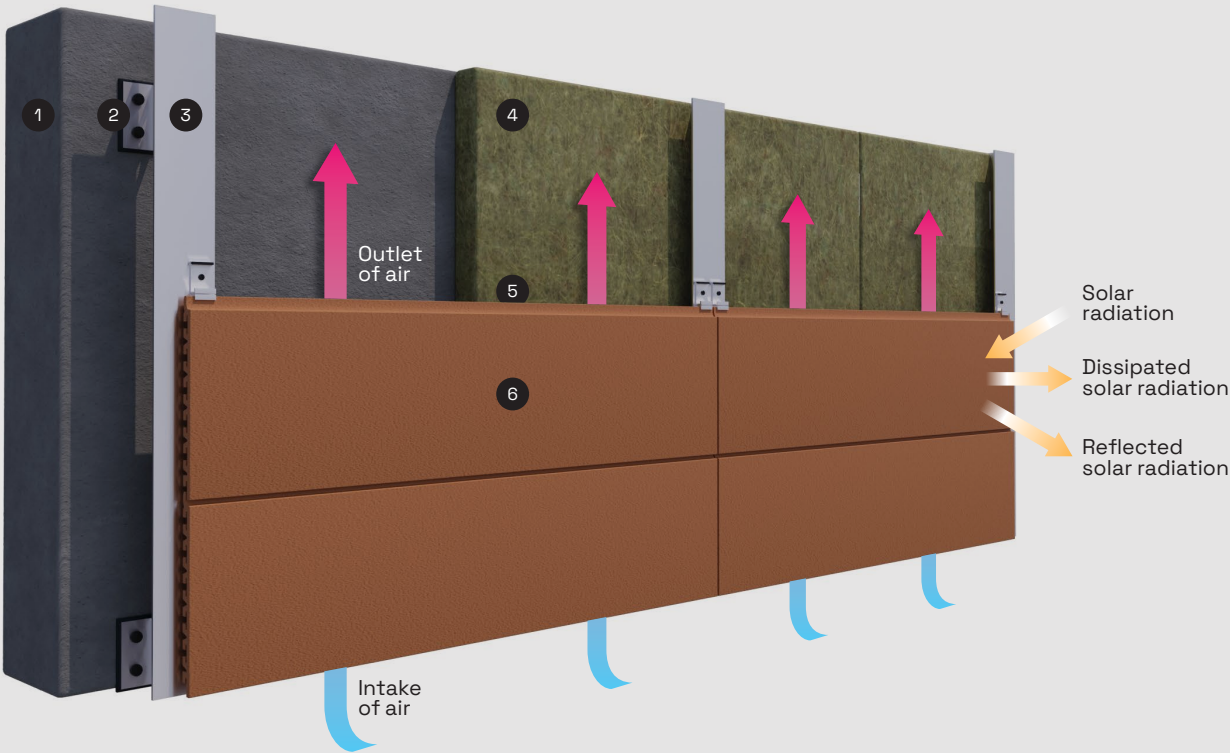




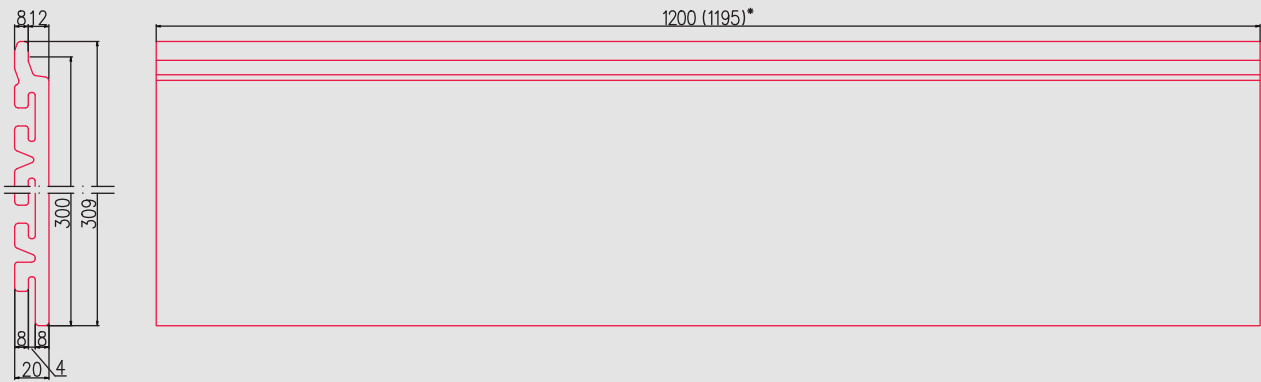
Installation

TERRAFACE instalation scheme

- 1 Support
- 2 Bracket
- 3 Vertical carrier
- 4 Thermal insulation
- 5 Ventilation gap
- 6 TERRAFACE terracota clading

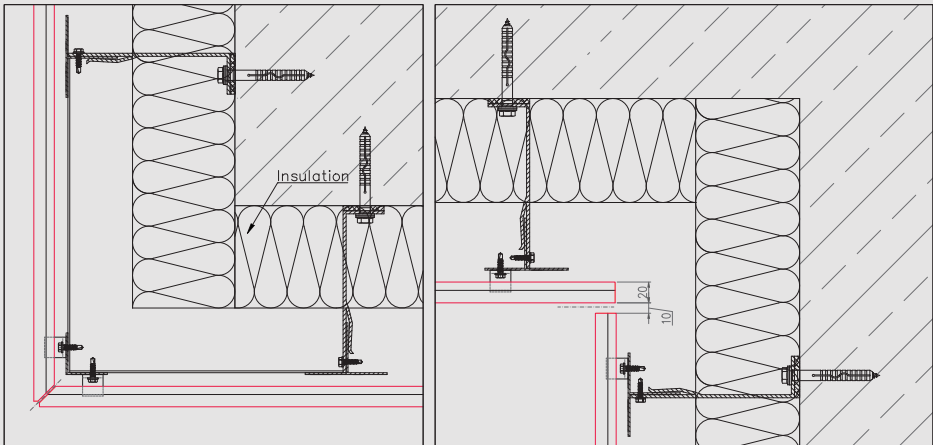


TERRAFACE panel dimensions

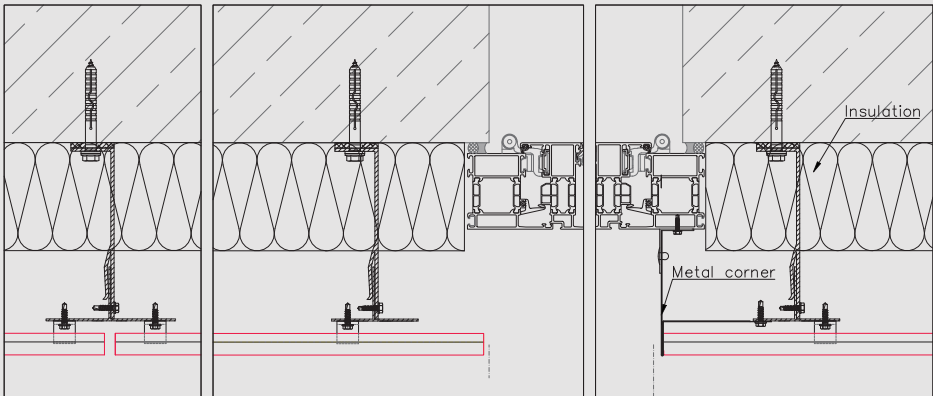


* Visible grid range of one panel: 300 x 1200 mm.
Delivered panel dimintions: 309 x 1195 mm

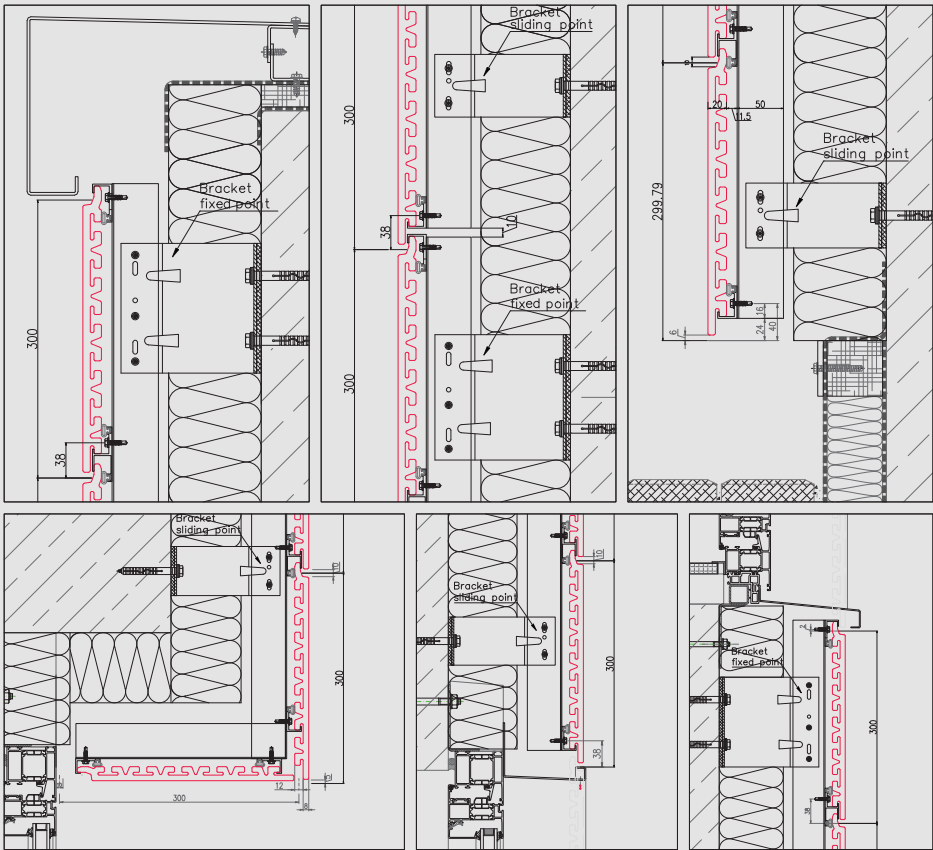
Horizontal section



Horizontal section

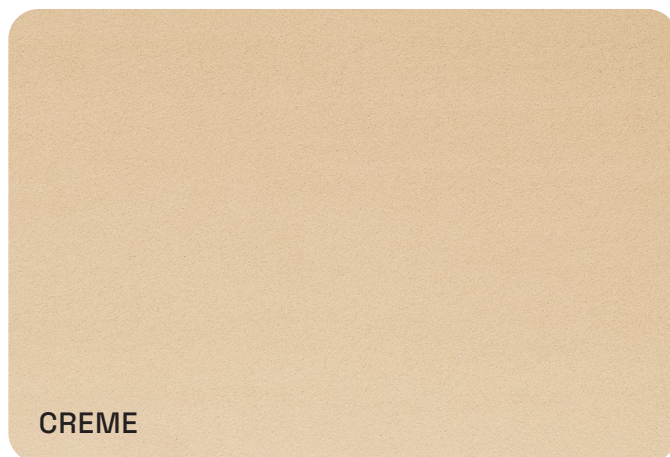


Vertical section



TERRAFACE

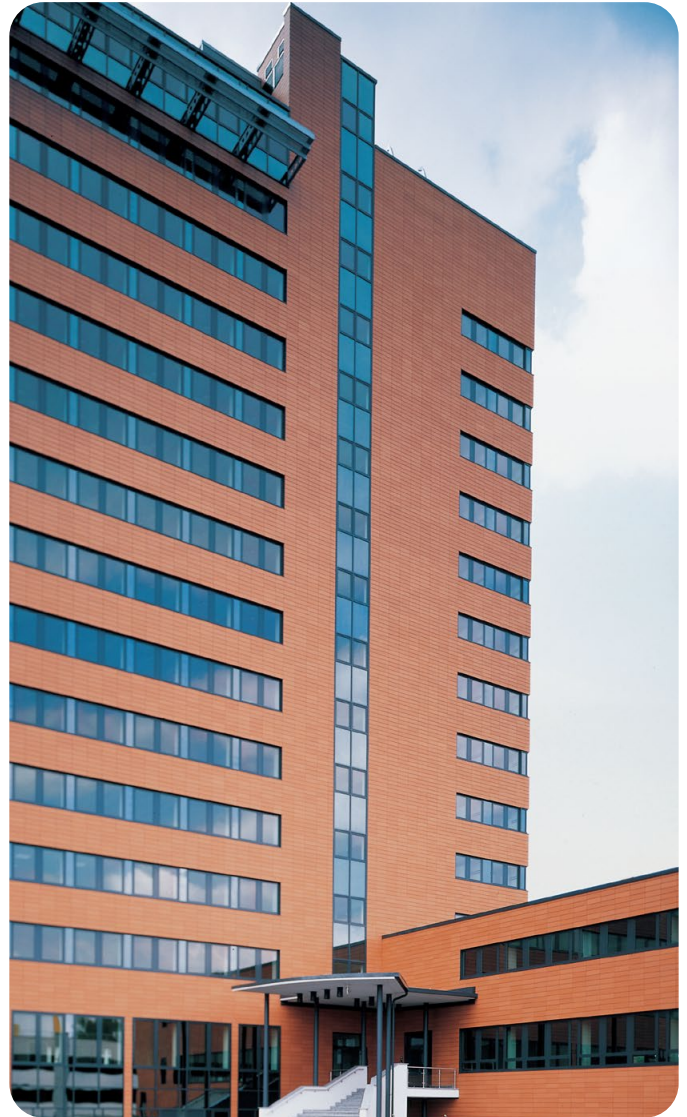
selected colors



Technical data

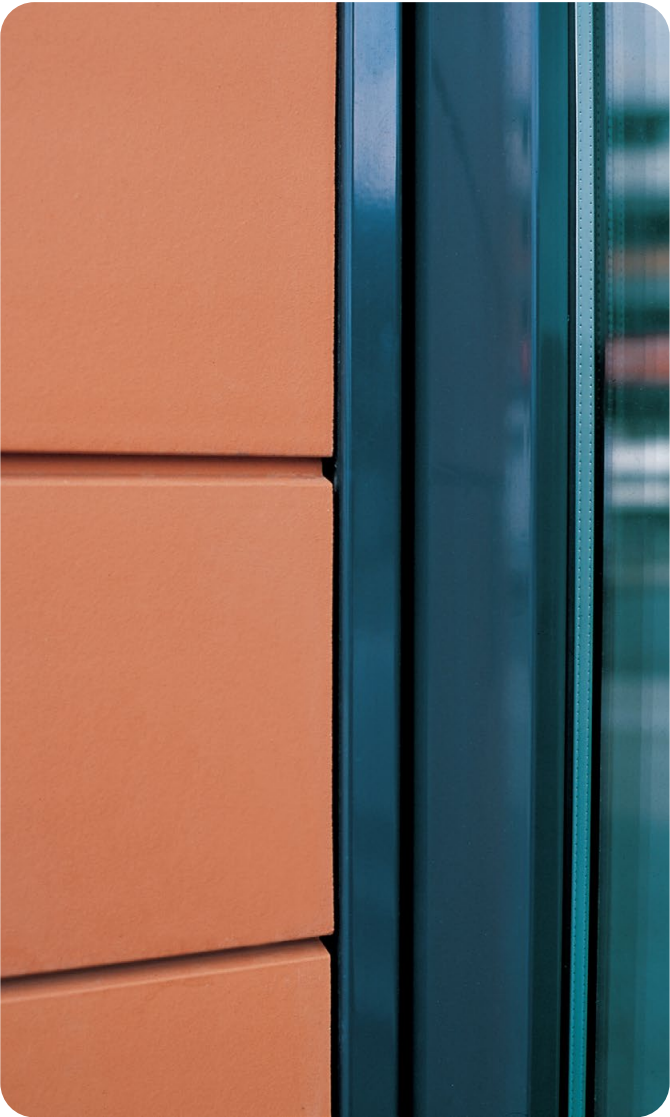
TERRAFACE

TYPE OF MATERIAL	STANDARD	VALUE NATURAL TERRACOTTA
Panel size	EN ISO 10545-2	1200x300 mm
Thickness	EN ISO 10545-2	20 mm
Bulk density	EN ISO 10545-3	2,24 g/cm ³
Panel weight kg/m ²	EN ISO 10545-2	31,5 kg (±2 kg)/m ²
Panel weight kg/pc	EN ISO 10545-2	11,5 kg
Water absorbtion	EN ISO 539-2	Brick red: 3-5%
		Creame: 2-4%
		Grey: 2-4 %
Breaking load		Bending pressure: min. 3.200 kN
	EN ISO 10545 Part 4	Bending tension: min. 4.800 kN
Frost resistance	EN 539-2 (E)	Comply (min. 90 cycles)
Measurement deviation tolerances:	EN ISO 10545-2	
Length	1200 mm	+0,00/-1,00 mm
Width	300 mm	+/- 2,00 mm
Thickness	20 mm	+/- 1,50 mm
Flatness		max 2,00 mm
Top edge curvature		max 0,3 %
Bottom edge curvature		max 0,3 %
Right angle		max 2,00 mm
Fire classification	EN 13501-1	A1









TERRAFACE

Terracotta Cladding



+370 686 44 054
(Mobile/WhatsApp/Viber)

S. Žukausko str. 20
LT-08234 Vilnius, Lithuania

+49 176 30628338

info@sfibral.com

www.sfibral.com