



For you to create



Fundermax

Exterior Pro 2.2
Authentic

As unique
as me.





Table of Contents

Product Information	4
Sustainability and Environment	8
Authentic Collection	12

Fundermax

Whether it's for furniture, facades, or interior design, Fundermax is where ideas and materials come together. As the world market leader of high-quality compact laminate panels, the company can proudly look back on 130 years of history. Our continued success is due to our high quality products, innovative design, wide variety of applications and decors, and sustainable production. Our panels are made in Austria, with a love for wood as a natural raw material, and endless opportunities for unique creations and innovative ideas.

- Modern production facilities in Austria and Norway
- Approximately 1,400 employees
- Annual turnover of 430 million euros
- Part of Constantia Industries AG
- State Prize for Corporate Quality (2018)

1 Product Information



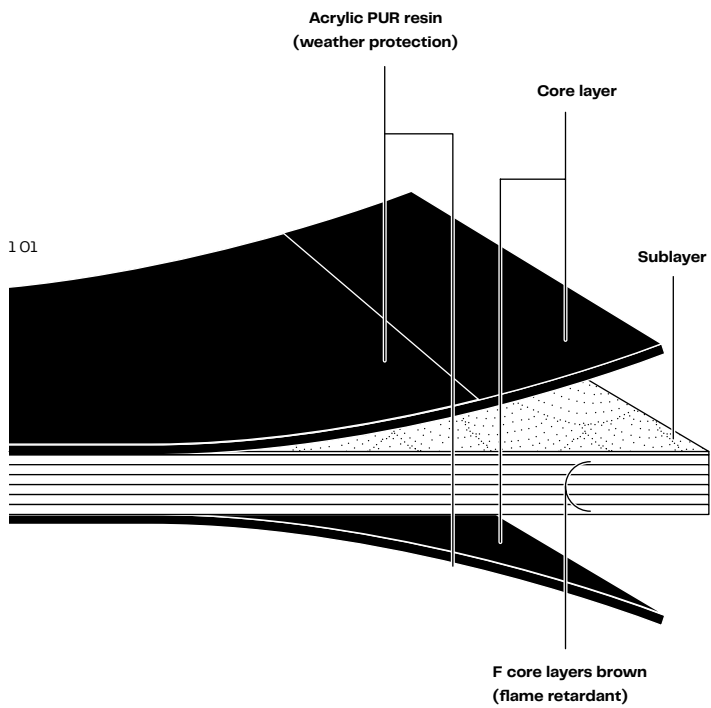


**“Only good ideas and products
stand the test of time.”**

(Isabelle S., Project Manager)

Material Description

Max Compact Exterior Authentic panels are duromer high-pressure laminates (HPL) in accordance with EN 438-6 that are produced under high pressure and heat. Thanks to the double-hardened acrylic polyurethane resins, the durable panels offer effective weather protection and are suitable for a wide variety of outdoor applications.

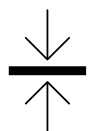


1 01 Construction of Max Compact Exterior Authentic Panels

Material Properties



Extremely weather resistant



Double-hardened



Scratch resistant



Solvent resistant



Easy to clean



Impact resistant



Easy to install

Sizes

- JU = 4,100 x 1,300 mm
- XL = 4,100 x 1,854 mm

Core

The core is available in F-quality and brown color.

Thickness

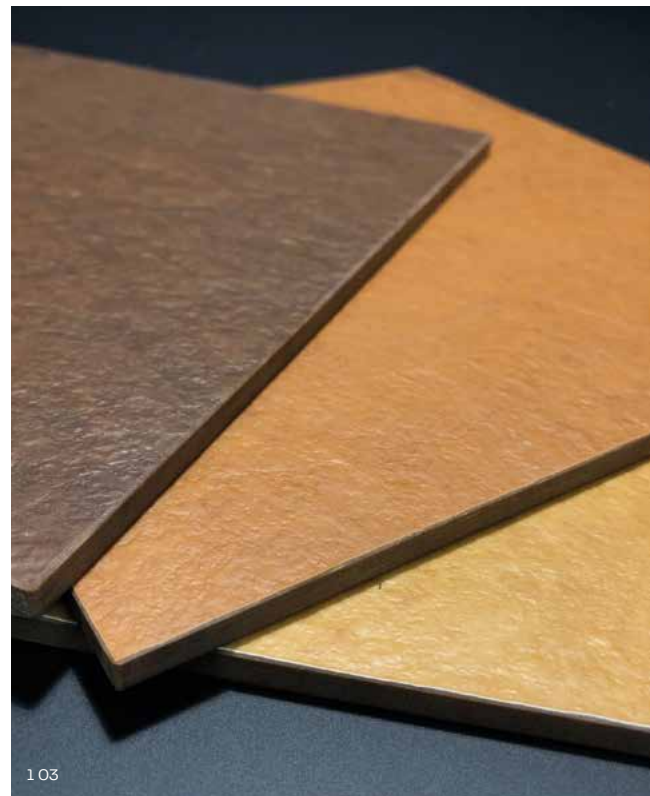
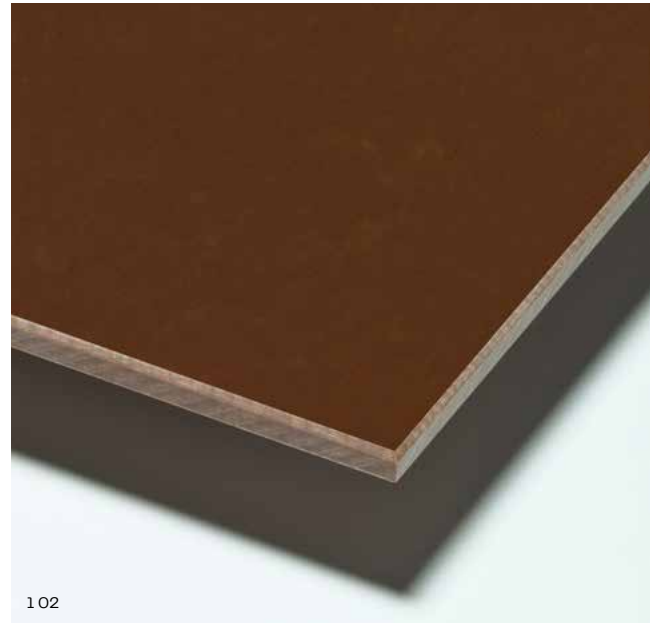
For thicknesses, versions, and tolerances, please see the Product Portfolio on page 16.

Slip Resistance (NH Hexa)

- R10 in accordance with DIN 51130
- Group C in accordance with DIN 51097

Approval – General Type Approval


Approval No. Z-10.3-712



1 02 AU01 NT Authentic Mocca

1 03 Authentic NY Sky

2 Sustainability and Environment



**“My work should leave
a mark, but in a
sustainable way.”**

(Henrik T., Entrepreneur)



Sustainability in the Company

Fundermax is a specialist in the processing of renewable raw materials, and has been for over 130 years. This means closed production cycles, recycling of remnants in the manufacturing process, and energy recovery in green electricity district heating plants. Fundermax supplies district heating to over 8,500 households.

Quality Management

The production facilities and processes are based on internationally recognized standards (ISO 9001, ISO 14001, ISO 50001, ISO 45001). Fundermax also follows current standards such as FSC®-C101966 and PEFC™ (details: www.fundermax.com) when procuring raw materials and preliminary products.

Sustainable Production

Max Compact panels consist of natural fibers (approximately 65% of the total weight) and are mainly made of wood that has been processed into "kraft paper". This kraft paper is a byproduct in the production of lumber or in sawmills. The raw materials come from suppliers who are certified in accordance with the FSC®-C101966 and PEFC™ standard, which guarantees sustainable forest management.

The kraft paper is impregnated with synthetic resins through an impregnation process, then is dried and pressed under high pressure and heat into durable moisture resistant panels. They contain no organic halogen compounds, asbestos, wood preservatives (fungicides, pesticides, etc.), sulfur, mercury or cadmium.

The exhaust air extracted during drying is treated by regenerative thermal oxidation. The heat generated is fed back into the process, which saves approximately 10,000 ton of CO₂ each year. This exhaust air treatment was also awarded the "klimaaktiv" award by the Austria Energy Agency and the Federal Ministry for the Environment.

Disposal

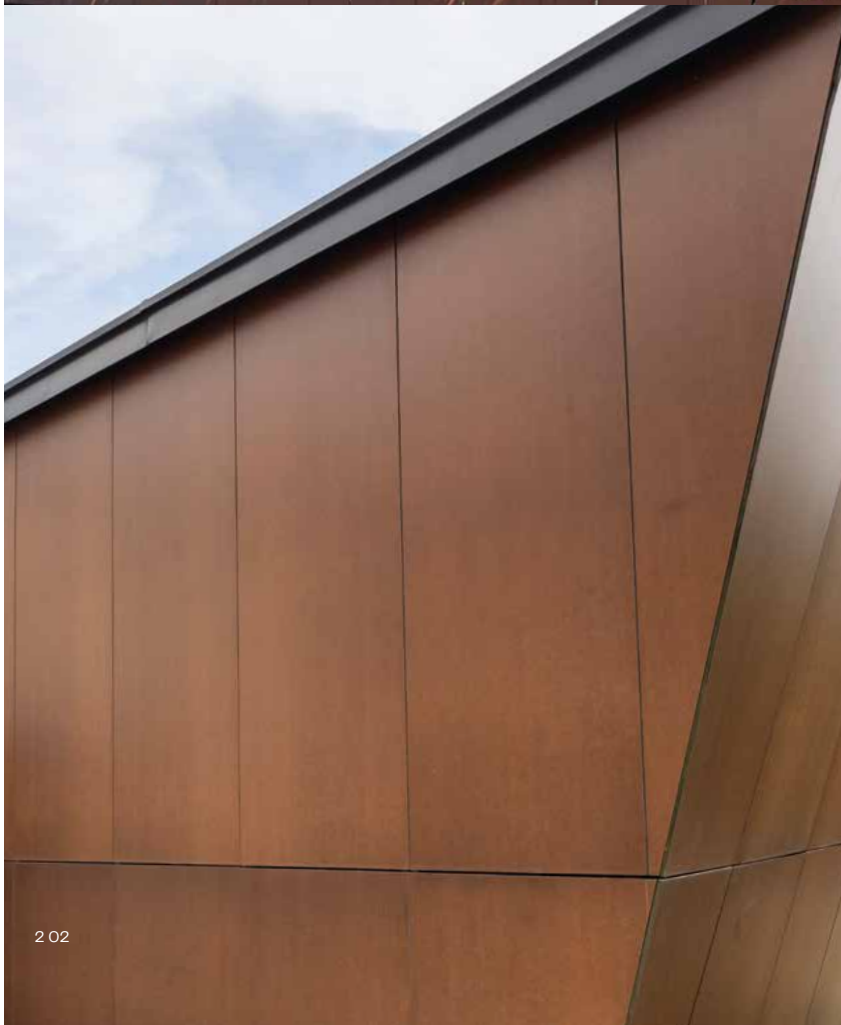
Chips are produced when cutting and milling Max Compact panels. These can be thermally disposed of in modern heating systems without the formation of hydrochloric acid, organic chlorine compounds or dioxins. Max Compact only decomposes into carbon dioxide, nitrogen, water and ash. The resulting energy is used for district heating. Disposal in commercial landfills is also allowed, however, please be sure to observe and follow the country-specific laws and regulations.





2 01 Object: Les Lofts de la Baume, France

2 02 Object: Obwegger Bau Döbriach, Carinthia



3 Authentic Collection

“The same applies to materials: authenticity is key.”

(Lydia H., Client)





We are all unique, strong in character and value one thing above all: authenticity. We have that in common with Exterior Pro 2.2 Authentic. The product structure provides an incomparable, natural appearance. The production process of this “pure material” creates shades, color nuances, and facets that make each piece unique.

Change is part of the life and character of Authentic panels. The individual appearance of the organic panels is created by the power of nature (e.g. exposure to the sun). This intentional fading isn't at the sacrifice of durability. The material is extremely durable and permanently protects buildings from weather, UV rays, impact, solvents and other influences.

Decors

Lovers of brown and natural tones can now enjoy three completely new decors, all part of the Authentic Natura (AUTN) family.

Authentic Mokka

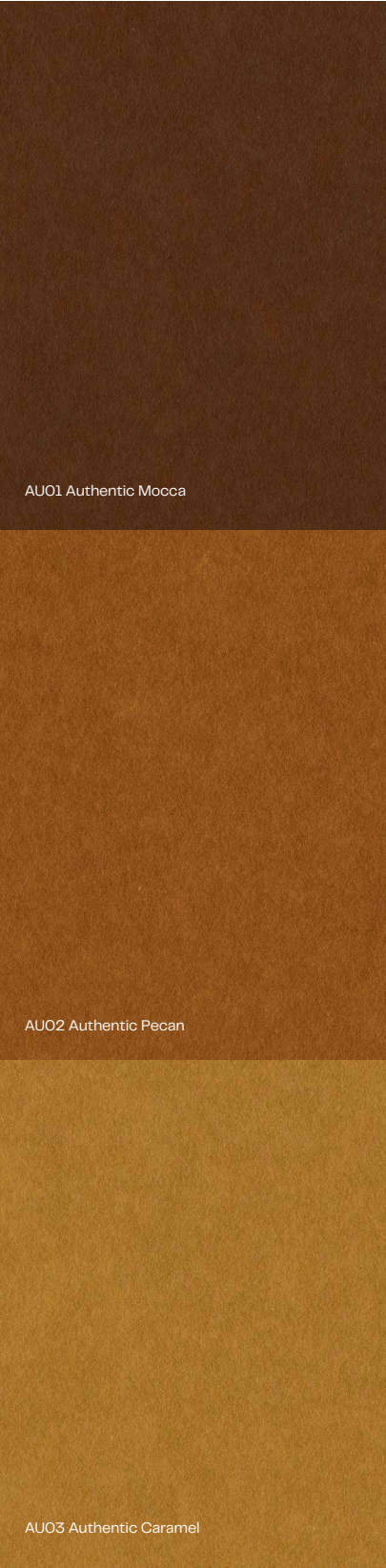
Sometimes stronger, milder, darker, lighter – all in all, Authentic Mokka is a more than tasteful composition.

Authentic Pecan

With pecans, the treasured content is protected by a resistant shell. The same is true of a building's interior and facade. By using "Authentic Pecan" an aesthetically pleasing look can be achieved.

Authentic Caramel

Facades in a "salted caramel look" range from golden yellow to honey brown. This decor was inspired by the widely loved caramel candy with its different shades of color.



AU01 Authentic Mokka



AU02 Authentic Pecan



AU03 Authentic Caramel



Surfaces

Each decor of the Authentic Collection is available in three surface finishes.

NT

A silky matte effect ensures a delicate shimmer paired with the fine hammered look, which, when combined, creates an overall pleasing aesthetic for facades.

NY Sky

A convincing illusion of depth due to a pleasant to the touch, uneven surface. The matte-looking structure is combined with shiny inclusions that sparkles depending on how the light hits it.

NH Hexa

The deep studded structure of this surface not only looks good, but also ensures safety. The non-slip embossing ensures protection against slipping, on balcony floors, terraces, or stairs.



NT

NY Sky

NH Hexa

Product Portfolio

				Product	Max Compact Exterior Pro 2.2 Authentic			
				Sizes (mm)	4,100 x 1,300	4,100 x 1,854	4,100 x 1,854	Decor on Rear Side Decor Direction
				Thicknesses (mm)	6, 8, 10, 12, 13	6, 8, 10, 12, 13	16, 18, 20	
				Quality/Core Color	F-Quality, Brown			
Decor Type	Decor No.	Decor Name	Surface					
C	AU01	Authentic Mocca	NT/NT		○	○		X R
C	AU02	Authentic Pecan	NT/NT		○	○		X R
C	AU03	Authentic Caramel	NT/NT		○	○		X R
C	AU01	Authentic Mocca	NT/NY		○			X R
C	AU02	Authentic Pecan	NT/NY		○			X R
C	AU03	Authentic Caramel	NT/NY		○			X R
C	AU01	Authentic Mocca	NT/NH				○	X R
C	AU02	Authentic Pecan	NT/NH				○	X R
C	AU03	Authentic Caramel	NT/NH				○	X R

Surfaces

NT
NY = Sky
NH = Hexa

Delivery

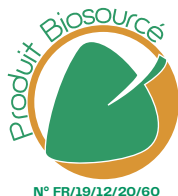
○ = Based on current delivery time
NT/NY and NT/NH
Delivery NT above

Decor Type

C = Authentic

Decor/Decor Direction

X = Decor on both sides
R = This decor is directional.
Please note for optimization and cutting.


Note:

The images show the Authentic Natura decor. Due to the material and the printing process, the original patterns may differ from the images in this brochure

Authentic – Physical Data and Approvals

Properties	Test Method	Test Result	Standard Value ¹	Actual Value
Light Fastness and Weather Resistance				
Artificial Weathering	EN 438-2 2016, paragraph 29, 3000 h	EN 20105-A02 Gray Scale	Contrast: ≥ 3, Appearance: ≥ 4	Contrast: 2-3, Appearance: 5
Resistance to UV Radiation	EN 438-2 2016, paragraph 28	EN 20105-A02 Gray Scale	Contrast: ≥ 3, Appearance: ≥ 4	Contrast: 2-3, Appearance: 3-4

Properties	Test Method	Test Result	Standard Value ¹	Typical Value ²
Mechanical Properties				
Bulk Density	DIN 52328 / EN ISO 1183	g/cm³	≥ 1.35	1.44
Flexural Strength	EN ISO 178	MPa	≥ 80	Across: 105, Lengthwise: 170
E-Module	EN ISO 178	MPa	≥ 9,000	Across: 11,000, Lengthwise: 16,000
Tensile Strength	EN ISO 527-2	MPa	–	Across: 95, Lengthwise: 140
Resistance to Impact Loading (large sphere)	EN 438-2:2016, paragraph 21	mm	≤ 10	5-6
Thermal Properties				
Resistance to Humidity	EN 438-2:2016, paragraph 15	%	Mass Gain: ≤ 8	2
Dimensional Accuracy at Increased Temperature	EN 438-2:2016, paragraph 17	%	Lengthwise: ≤ 0.30 Across: ≤ 0.60	Lengthwise: 0.08 Across: 0.16
Thermal Expansion Coefficient	DIN 52328	1/K		18 x 10 ⁻⁶
Thermal Conductivity		W/mK		0.3
Water Vapor Diffusion Resistance				ca. 17200 μ
Building Material Class				
Building Material Class Europe	EN 13501-1	MA39-VFA VIENNA	EUROCLASS B-s2, d0 for 6-13 mm*	
Facade Fire Test Austria	ÖNORM B 3800-5	MA39-VFA VIENNA	Tested Panel Thicknesses 8-13 mm	
Building Material Class Switzerland	EN 13501-1	MA39-VFA VIENNA	EUROCLASS B-s2, d0 für 6,0-13,0 mm*	
Building Material Class France	NRP 92501	LNE	M1 for 2-10 mm	
Building Material Class Spain	UNE 23727-90	LICOF	M1 for 6-10 mm	

Approvals				
Facade Approval Germany		Institute for Structural Engineering Berlin	6, 8, 10 mm, approval no. Z-10.3-712	
ETB Guideline for Components that Secure Against Falling, from 6/1985 Balcony Railing		Technical University of Hanover	passed (depending on building regulations and railing construction 6, 8, 10 or 13 mm panel thickness)	
Avis Technique France		CSTB	6, 8, 10 and 13 mm, Wood and Metal Substructure, Approval Avis Technique N° 2/16-1749 Avis Technique N° 2.2/14-1623_V1 Avis Technique N° 2.2/13-1565_V2 Avis Technique N° 2.2/21-1809_V1 Avis Technique N° 2.2/16-1716 Avis Technique N° 2/16-1753 Avis Technique N° 2.2/12-1505*V2	
Winmark		Wintech	A10114	

A gloss tolerance of ±5 GE applies to the NT surface, measured at 60°. With regard to color tolerance, the ÖFHF information sheet on tolerances applies (as of 2017-1-16; www.oefhf.at).

* Exception: Podio Balcony Floor Panel, EUROCLASS B-s2, d0 (6.0-20.0 mm)

¹ In accordance with EN 438-6

² Exemplary representation – Fundermax only guarantees compliance with the standard values

Further Tests and Approvals: www.fundermax.at/downloads

Legal Notice:

Please observe the applicable building regulations. We assume no liability in this regard.

Please check whether your construction project meets the requirements for the effective restriction of fire propagation (e.g. OIB RL 2, DE Sample Management Regulations for Technical Building Regulations MVV TB, etc.). This brochure is intended for professionals who are familiar with the relevant standards, technical regulations, legal requirements and relevant guidelines for building products.

These guidelines have been prepared with great care, but we would like to point out that the responsibility for the correct planning always lies with the planner and the responsibility for correct installation always lies with the installer





Fundermax Deutschland GmbH

Mundenheimer Weg 2
D-67117 Limburgerhof
info@fundermax.biz
www.fundermax.com

Fundermax France S.a.r.l.

3 Cours Albert Thomas
F-69003 Lyon
T +33 (0)4 78 68 28 31
infofrance@fundermax.biz
www.fundermax.com

Fundermax India Pvt. Ltd.

Sy. No. 7, Honnenahalli, Doddballapur Road,
IND-Yelahanka Hobli, Bangalore – 560064
T +96113 99211
officeindia@fundermax.biz
www.fundermax.in

Fundermax Italia s.r.l.

Viale Venezia 22
I-33052 Cervignano del Friuli
infoitaly@fundermax.biz
www.fundermax.com

Fundermax North America, Inc.

9401-P Southern Pine Blvd.
Charlotte, NC 28273, U.S.
T +1 980 299 0035
office.america@fundermax.biz
www.fundermax.us

Fundermax Polska Sp. z o.o.

ul. Rybitwy 12
PL-30-722 Kraków
T +48 (0)12 65 34 528
infopoland@fundermax.biz

Fundermax Swiss AG

Industriestrasse 38
CH-5314 Kleindöttingen
T +41 (0)56 268 83 11
infoswiss@fundermax.biz
www.fundermax.com

1/23-PR124-ENWEB

Fundermax GmbH

Klagenfurter Straße 87-89, A-9300 St. Veit/Glan
T: +43 (0)5 9494-0, F: +43 (0)5 9494-4200
office@fundermax.at
www.fundermax.com

MEMBER OF *Constantia* INDUSTRIES

Legal notice:
Fundermax GmbH, 9300 St. Veit/Glan
Producer: Print Alliance, 2540 Bad Vöslau



Made in Austria